



**THE CLAYTON  
GUIDE TO STEAM  
GENERATION**



## History

**Clayton Steam Systems** is a world leader in the design and manufacture of compact, high efficiency, rapid start steam systems that are safe to use and are of advanced designs.



The **Clayton Company** was founded in 1930 and reorganised under the name of the Clayton Manufacturing Company in 1935 to investigate and develop new concepts in thermodynamic and mechanical products. The Clayton Steam Generator was the first such product and was conceived as a packaged, force circulation coil steam generator that could automatically produce steam in five minutes from a completely cold condition.

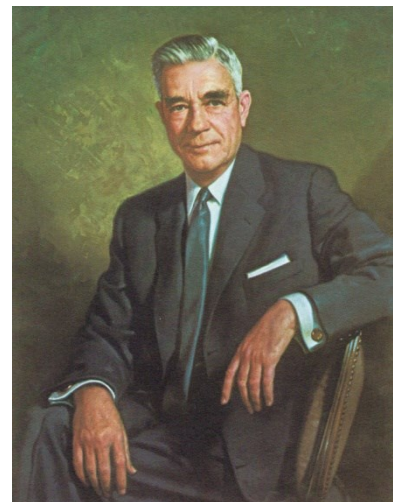
The **Clayton Steam Generator** is of a unique design where high efficiency and rapid start-up are combined with high steam quality and fast response to changes in steam demand. In addition, the low blowdown requirement saves energy, water and treatment chemicals. The operating principle of the Clayton Steam Generator has eliminated the need to contain and heat large quantities of water. Consequently all generator models are small in size and weight and can be accommodated within a limited space.

One of the major safety advantages of the small water content is that there is no possibility of a steam explosion from a Clayton Steam Generator.

The energy saving features of the Clayton Steam Generator was of considerable interest to William Clayton who was concerned with fuel conservation long before the modern day awareness and effects of energy use.

The **Clayton Exhaust Gas Boiler** operates on the same tried and tested principles and has been produced to satisfy a variety of industrial and marine applications to recover heat from waste gas.

Designs are continually being improved and developed as well as being upgraded to incorporate the latest engineering technology and techniques. The range of sizes has been added to over the years and it is now no longer necessary to use the traditional fire tube boiler for outputs in excess to 60 tonnes of steam per hour.



**The many advantages of the designs make Clayton Steam Systems ideally suitable for any steam application.**

Movies can be viewed on our website [www.claytonindustries.co.uk](http://www.claytonindustries.co.uk)

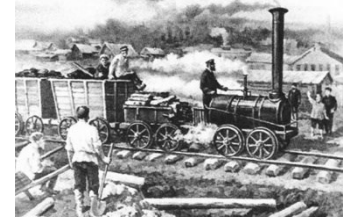


## The Old Steam Age

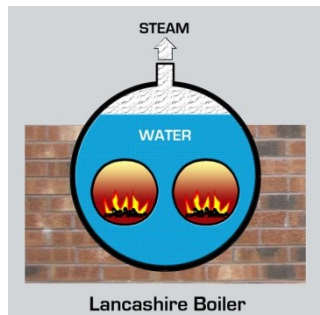
**Steam** was the driving force during the days of the industrial revolution and was used to power the giant textile mills, steam trains and ocean going ships of the time.



In those days steam boilers were just like the common domestic kettle where a volume of water is heated in a container and steam is ejected through the spout.



One such steam boiler design was the famous Lancashire Boiler that was the most advanced of its time. In this boiler coal was used as fuel to heat two 'firtubes' which in turn heated the water that surrounded them. As the temperature of the water rose, steam bubbled off the water surface and into the steam pipe.



However one of the many drawbacks of the old firetube design was the explosion hazard that caused death and serious injury with alarming frequency. These tragedies were regarded as acts of god in those days but we now know that they were a consequence of this particular method of steam production. The hot water is stored inside a firetube boiler at the same pressure as the steam and a failure of the outer casing will cause the water to expand to around 1600 times its volume in less than a second - causing a devastating explosion. This is most likely to happen when the water level in the boiler drops to a dangerously low level.

It's not difficult to imagine the second disadvantage which is the time it takes to heat up in the first place. This is measured in hours rather than minutes because the large mass of steel and water must first be heated before the steam pressure can build up. This means that boilers had to be started well in advance of when they were needed - or had to be kept ticking over so that they were available when steam was required. The inherent lag in response also meant that the boiler had to be large enough in size to cater for varying outputs.

These old boilers are early versions of the firetube boilers that are the horizontal cylindrical shape we still recognise today. Improvements in the firetube design have, of course, been made where possible.

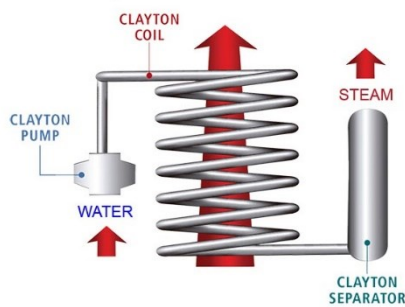
**But why didn't someone come up with a different method of producing steam that does not have all of these disadvantages? - Well Someone Did!**

Movies can be viewed on our website [www.claytonindustries.co.uk](http://www.claytonindustries.co.uk)



## The New Steam Age

**Instead** of heating a large amount of water and steel - heat a small amount of water and steel.



This is possible by pumping water through the inside of a small diameter heated coiled tube so that cold water goes in one end and high pressure steam comes out the other. The Clayton Steam Generator is a unique design that does just that. Instead of the familiar steam train image of a boiler we now have a compact steam making machine with staggering advantages for the world we live in today.

The latest Clayton Steam Generator E-Models uses only three main components. These components are a special pump, a special water tube coil and a special steam separator. Water is heated as it is pumped through the coil and it is then fed to the steam separator to produce very high quality dry steam.

So all of the momentum from the heavy steel and large volume of water has been eliminated which means that the boiler is small in size and will start-up in five minutes from the flick of a switch. The response is more like a racing car than an oil tanker when it's running because the steam flow is synchronised with the speed of the pump and the heat source - so it can ramp up and down in seconds with unrivalled fuel efficiency. And when it is not needed at the end of the working day it can be switched off with the lights to conserve energy.



The basic operating principle produces one advantage that leads to another and another. These are not limited to the quick start-up, rapid response, small size, low weight, low running cost automatic operation, and reliability.

Many people consider that the main advantage of the Clayton Steam Generator compared to a firetube boiler is that safety has taken a great leap forward. This is because there is no possibility of a steam explosion. It is not even necessary to check the water level – because there isn't one. So the peril that was a constant danger once-upon-a-time has now been completely eliminated. In fact the Clayton Steam Generator can run without operator attendance even at very high steam pressures and temperatures.



The Clayton E-Model

Most of the world forward looking companies and institutions that use steam in their production or process already operate Clayton Steam Generators.

**The traditional horizontal cylindrical boilers image that made history has now made way for high powered vertical Clayton Steam Generator of today.**

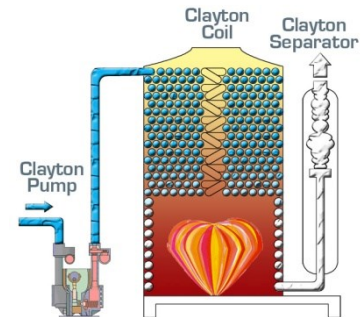
Movies can be viewed on our website [www.claytonindustries.co.uk](http://www.claytonindustries.co.uk)



## Principle of Operation – E- Model

**The Reason** for the many advantages of the Clayton Steam Generator is the Forced Circulation Monotube Coil Concept. This operates on a simple but ingenious principle.

On the Clayton E-Model Steam Generator the boiler feedwater is pumped by means of a specially designed Clayton Pump and is forced through a single heating coil from the top to the bottom. The steam/water mixture from the outlet of the coil is then passed to a high efficiency centrifugal separator. Steam quality from a Clayton Steam Generator is up nearly completely dry saturated and the separated water is re-cycled.



**The Clayton Coil** is of a unique design that has been developed for optimum heat transfer at all steam output levels.

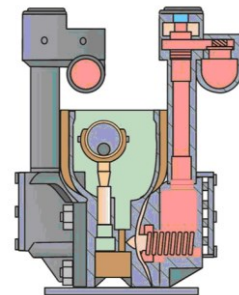
The E- Model coil is a single water tube that is stacked in spirally wound layers in the upper section and forms a 'water wall' around the combustion chamber of the lower section. The configuration of the coil as well as the variation in the tube diameter, spacing between layers and spacing between tube turns in different temperature zones of the coil are all carefully designed to maximise efficiency and prevent hot spots.



The spiral construction of the coil is extremely robust and counteracts the effects of expansion during rapid heating and cooling. In the case of oil fired units, sootblowing facilities are provided to remove deposits from the outside of the coil while the unit is in operation to keep it running at maximum efficiency.

**The Clayton Pump** is of a remarkable design and is manufactured specifically to provide the forced circulation through the coil of a Clayton Steam Generator.

The pump is a positive displacement type that ensures flow stability over a wide range of varying pressure conditions. The Clayton Pump does not rely on mechanical seals, packing rings or glands to separate the water being pumped and the drive mechanism. Operation is completely unaffected by high water temperature and the construction of the Clayton Pump is extremely robust, very reliable and low in maintenance.



On every Clayton Steam Generator the pumping rate is synchronised to the burner firing rate so that the steam output can be ramped up and down as required.

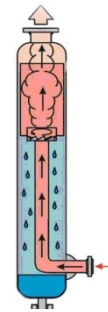
Movies can be viewed on our website [www.claytonindustries.co.uk](http://www.claytonindustries.co.uk)



## Principle of Operation – E- Model

**The Clayton Steam Separator** is a high efficiency centrifugal design that has no moving parts. The very high steam quality is produced even under variable load conditions and is at least 99.5% dry saturated.

The steam/water mixture from the Clayton Steam Generator is directed to the inlet of the separator where it is directed over a series of vanes and separated by means of centrifugal force. The water is collected and dry steam is discharged through the top outlet. The blowdown from a Clayton Steam Generator is extremely low since this is taken from the water collected by the separator.



E-Model Steam Separator

**The Clayton Burner** on the E-Model is specially designed to ensure that the flame is confined to the combustion chamber and that combustion is complete before the hot gasses are released over the coil.

To achieve this, the air for combustion enters the burner manifold at high velocity where it picks up fuel in a whirlpool action to form a heart shaped flame where the flame tip folds over into the low pressure zone. Fuel and air are blended in precise ratios and the burner fires upwards, which is the natural direction for heat.



### *The Clayton E-LN -Model*



Movies can be viewed on our website [www.claytonindustries.co.uk](http://www.claytonindustries.co.uk)



## Benefits



Very high efficiency is the most obvious benefit that comes from small sizes because of the low heat losses. Also, heat flow is upwards - in the opposite direction to the water flow to optimise heat transfer.



The compact size means minimal space is required for a complete boiler house. Building costs are reduced and the light weight even allows location on an upper floor level.



Start-up from a completely cold condition is five minutes. Warm-up fuel is negligible and the unit can be quickly switched off when not required.



It is not possible to have a steam explosion. This is a danger associated other types of boiler that store a large volume of hot water under pressure.



Steam quality is the best available from any type of boiler. 99.5% dry saturated under all steam loads. This reduces water and impurities in the steam line and increases energy in the steam.



Very rapid response to changes in steam demand is inherent in the forced circulation principle. Fast ramp rate and continuous fine control - without faltering.



Blowdown, that is necessary to prevent build-up of impurities in boilers, is extremely small. This saves fuel, saves chemicals and saves water.



Like most modern advanced machines, operation is fully automatic. There is also an automatic, remote start / stop facility.



Because of the inherent safety and automatic systems, units can be supplied to run without operator attendance for up to 72 hours.



One of the practical benefits of the simple design is minimal maintenance. The Clayton Steam Generator the most reliable steam boiler available today.

Movies can be viewed on our website [www.claytonindustries.co.uk](http://www.claytonindustries.co.uk)



## Safety

**Unless** you have experienced a firetube boiler explosion personally it is hard to imagine the enormous destructive potential of steam. In a firetube boiler (shell boiler) a large mass of water is stored in a cylindrical vessel and heated to form steam. A faulty firetube boiler is just like a time bomb. It can produce a near instantaneous, uncontrolled, release of energy.

Fortunately, due to government legislation and established design codes as well as proper operator training and sophisticated control systems these explosions are now much less frequent than in days gone by. But there can be no cast iron guarantee that a disaster will not occur.



Overheating caused by low water is the most frequent cause of boiler explosions, or other damage. The most important job of the firetube boiler operator is to make sure the water level is correct at all times. In contrast a Clayton Steam Generator does not have a water level and it is not possible to have a steam explosion with the Clayton design.

*Clayton famously demonstrated this when they tested a **500 boiler horsepower steam generator to destruction after removing all of the safety devices** from the unit. This demonstration took place in front of an invited audience, including inspectors from the Technical Standards and Safety Authority of Ontario, Canada. The test was recorded on video.*



The operating principle of the Clayton Steam Generator is very different from that of the firetube boiler. A firetube boiler uses natural convection for heat transfer and subsequently it must store a large amount of energy in the form of high pressure hot water.

The Clayton Steam Generator, by comparison, uses forced circulation of water through a helical coil which is heated to produce steam. It follows therefore that there is relatively little water in a Clayton Steam Generator contained within the coil.

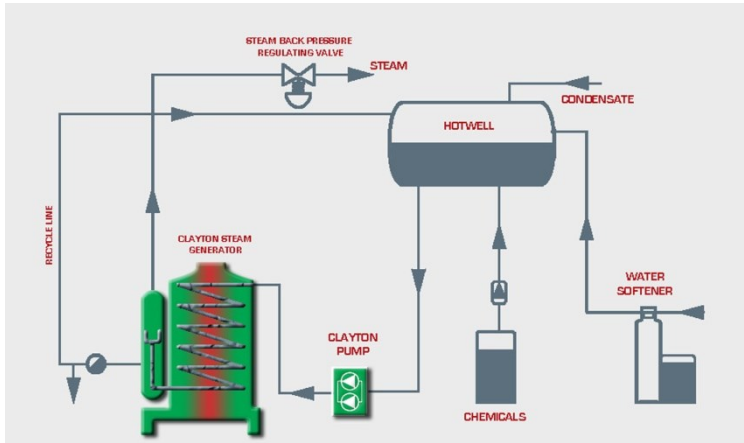
**Even if the coil of a Clayton Steam Generator is damaged in any way this cannot produce a dangerous condition.**

Movies can be viewed on our website [www.claytonindustries.co.uk](http://www.claytonindustries.co.uk)

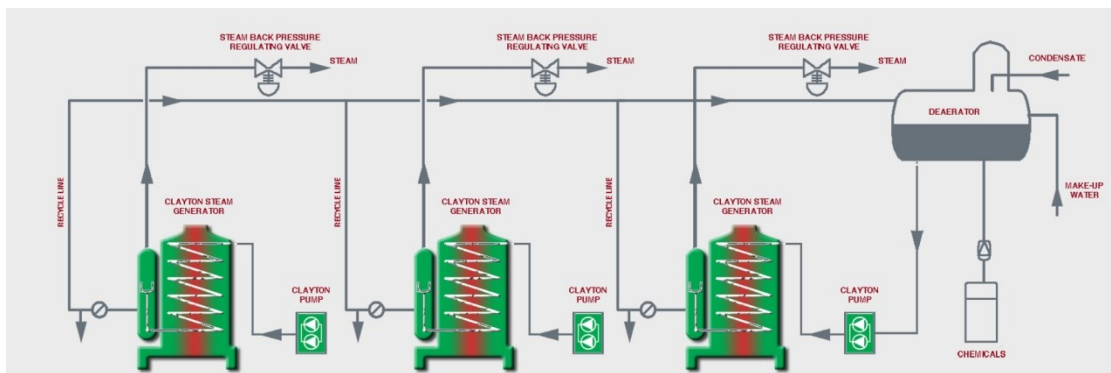


# E-Model Steam Systems

**Systems** and equipment that ensure trouble-free operation of the steam generating plant are designed with the same Clayton experience and expertise. Clayton offers a range of ancillaries and packages to match the selected steam generators and manufactured to the same high standards.



The most common system used on the Clayton E-Model is the Clayton **Open System** in which condensate can be returned at atmospheric pressure. In the Open System, boiler feedwater is directed from an atmospheric Hotwell to the Clayton Pump and is fed to the Clayton Steam Generator. Steam flows from the Clayton Steam Separator outlet nozzle through a backpressure regulating valve and the condensate from the separator is re-circulated back to the hotwell. The small amount of blowdown required on a Clayton Steam Generator is taken from the recirculation line. The make-up water supply can be passed through a water softener and chemicals can be dosed directly into the hotwell.



On multiple Clayton Steam Generator installations the feedwater equipment is common to all. Other tried and tested designs include the Clayton **Closed** and **Semi-Closed Systems** that are used where energy savings from condensate heat recovery is required.

**High Pressure and Superheated Steam** supply is another application where the design of the Clayton Steam Generator is perfectly suited. The small diameter water tube coil allows

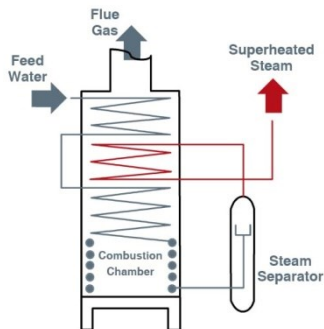
Movies can be viewed on our website [www.claytonindustries.co.uk](http://www.claytonindustries.co.uk)



## E-Model Steam Systems

steam pressures of up to 200 barg to be produced and the helical heat exchanger concept means that superheated steam can be generated up to temperatures of 460 degrees centigrade.

The spiral construction of the Clayton heating coil means that it is extremely robust and will counteract any effects of expansion and contraction during rapid heating and cooling cycles without experiencing any mechanical damage.



On Superheated Clayton Steam Generators the feed water is directed to the topmost layer of coil where it is pre-heated as it spirals downwards and fed to the lower section from where it passes to the high efficiency steam separator. Dry steam from the separator is then directed to the integral superheating coil section where the desired steam temperature is produced.

**Power Stations** have benefited by using the Clayton Steam Generator where superheated steam, high pressure steam and rapid start capability combined with the inherent safety have particular benefits. In both conventional and nuclear power stations the Clayton Steam Generator is used for peak shaving, auxiliary start-up steam, back-up steam supply and emergency steam.

When used as an auxiliary start-up boiler the Clayton Steam Generator enables a power plant to be brought on-line rapidly which means lower emissions, less fuel consumption, less water consumption, less chemical consumption, less electricity consumption and provides increased revenue as well as the commercial advantage that comes from having the flexibility of being able to start-up quickly.



**Marine & Offshore Steam Systems** are ideal applications where the safety, space saving, unmanned operation, reliability and modular construction have made Clayton the offshore standard for ships and offshore oil platforms. The Clayton Marine Steam Generator is type approved by many marine authorities and can be supplied to the requirements of any inspection agency.

Clayton's own marine standard includes specified materials, control systems, electrical motors, cabling, tagging, documentation and other essential features required in this demanding industry.



Movies can be viewed on our website [www.claytonindustries.co.uk](http://www.claytonindustries.co.uk)



## E- Model Ancillary Equipment

**Clayton Hotwells** are designed to perform several essential functions. The Clayton Hotwell provides feedwater for the Steam Generator acts as a reservoir for returned condensate and is an ideal means of blending water treatment chemicals. An important feature of the Clayton hotwell is that it is a partial deaerator capable of removing most of the oxygen - which is the major cause of corrosion in feedwater. The hotwell is steam heated to maintain a controlled temperature of around 90 to 95°C and the residence time is calculated to ensure that the oxygen level is significantly reduced.



Clayton Hotwells are available as either horizontal or vertical vessels. All are supplied complete with special inducer tubes, temperature control, automatic level control and automatic filling. For large steam flows, high pressure steam or superheated steam system the Clayton Thermal Deaerator may be recommended.

**Clayton Back Pressure Regulating Valves** can be provided with each steam generator to control the minimum pressure of the generator in response to the pressure sensed by an impulse line on the downstream side. The purpose of the valve is to ensure stable operation under fluctuating loads and is used as part of the Clayton Automatic Start System.



**Clayton Chemical Dosing Systems** will maintain the correct water quality which is a requirement of all types of steam raising plant. The systems incorporate a chemical storage tank which is sized for the Clayton Steam System and micro-processor controlled diaphragm chemical injection pump to accurately meter the amount of chemical used. The chemical dosing system will ensure long life of the equipment.

**Clayton Water Softeners** are of the automatic ion-exchange type that remove hardness from the raw feedwater. Because water softeners must be periodically regenerated these are available as single (simplex) units on plants where the Clayton Steam Generator will be off during regeneration and as double (twin) units for continuous or long running periods of the Clayton Steam Generator.



Regenerations of simplex water softeners are instigated on an operator-set time basis and twin softeners are fitted with a micro-processor which allows regeneration to take place in proportion to water usage.

Movies can be viewed on our website [www.claytonindustries.co.uk](http://www.claytonindustries.co.uk)



## E- Model Ancillary Equipment

**Clayton Water Test Kits** provides a simple and practical means of measuring the quality of the feedwater supply to the Clayton Steam Generator. The kit includes the necessary equipment to carry out tests for water hardness, levels of oxygen scavenger, dissolved solids and pH.



Full instructions for use are included with the kit and a Clayton Feedwater Treatment Manual is available which provides information on the water quality required and how this is achieved.



**Clayton Booster Pumps** will ensure that the minimum net positive suction head is maintained for the main Clayton Pump where the hotwell is mounted at low level. Booster pumps are selected to suit the generators being supplied.

**Clayton Blowdown Vessels** are designed to safely handle discharges from the automatic or manual blowdown systems on the Steam Generator. Blowdown vessels can also be supplied with discharge systems if required.



the  
Clayton  
cooling

**Clayton Water Treatment Chemicals** are specially formulated to maintain the correct water conditions to protect the Clayton Steam Generating System. The use of these chemicals will guarantee trouble free operation and long life of the equipment. Chemicals are available in powder or liquid form and are easily dosed using the Clayton Chemical Dosing Systems.



Movies can be viewed on our website [www.claytonindustries.co.uk](http://www.claytonindustries.co.uk)



## E- Model Skid Mounted Boiler Rooms

**Clayton Steam Generator Systems** can be supplied as separate modular units for installation on site or supplied as pre-assembled packages - or even as complete Skid Mounted Boiler Rooms which save installation time and on-site costs.

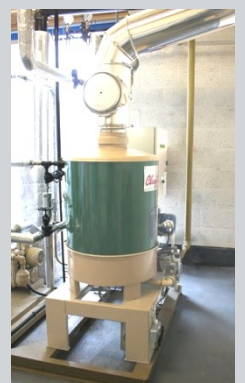
Each package is compact, easily transported and quickly installed. The systems can be supplied from our standard range or specially built to the customers' requirements. Fully automatic control can be included as well as monitoring devices, feedwater conditioning and all the necessary fittings, pipework and electrical wiring.



Feedwater Treatment Skid



Movies can be viewed on our website [www.claytonindustries.co.uk](http://www.claytonindustries.co.uk)



## Containerised Boiler Rooms

The Clayton Containerised Boiler Room is a completely weatherproof steam supply system that can be quickly connected on site and easily re-located when required. The small size of the Clayton Steam Generator makes it ideal for this type of construction and systems can be supplied as standard or custom built designs.



All containers are of a heavy duty, weatherproof construction and customised with openings, flooring, bracketing and doors as necessary to suit the application. The Clayton Steam Generator, along with other Clayton ancillary equipment such as the hotwell tank, water softener, blowdown tank, chemical dosing system, valves, controls, instrumentation, pipework and electrical wiring is installed by our specialist factory technicians and all equipment used is of the highest quality.

Some of the options that are available include, aluminium flooring, insulated walls, acoustic air intake dampers, automatic combustion air dampers, frost protection, cooling, lighting, fire protection and wall insulation. The outer surface of the container is shot blasted and coated with an epoxy paint system with a final colour of the customer's choice.



Movies can be viewed on our website [www.claytonindustries.co.uk](http://www.claytonindustries.co.uk)



## The Clayton Steam Master

The Clayton Steam Master (CSM) has been developed to provide advanced steam boiler technology in the small to medium size range.

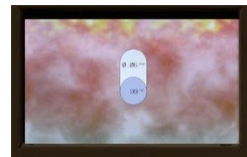


- Starts In Five Minutes
- Touchscreen Control
- High Efficiency
- Fully Modulating
- Low Emissions
- Safe
- Runs Without Supervision
- Easy to Operate
- Reliable
- Low Maintenance

The Clayton Steam Master has fully modulating output control from 100% to 25% when running on gas and the Clayton three step modulating control on oil. Electrical supply required is only 220V single phase with a power rating that is less than a domestic electric kettle.

Steam is produced by in the special steam master heated, once-through, water tube coil. An additional feature is the unique Clayton glandless, packless water pump that has been proven to give outstanding performance, response and reliability.

The Clayton steam master 'easy start' system is a straightforward means of putting the unit into service with valves and indicators conveniently located at the front. The user-friendly touch screen gives operator prompts and self-diagnostics with immediate visual indication of status. Information is clearly displayed to show that your steam supply is working perfectly.



There are currently three sizes of Clayton steam master available that can run on either oil or gas. The design represents progress that can only be achieved after more than 90 years' operating experience and manufacture of advanced steam generation equipment.

Movies can be viewed on our website [www.claytonindustries.co.uk](http://www.claytonindustries.co.uk)



# The Clayton Steam Master

The Clayton Steam Master scope of supply can be customised by the addition of the following option packages

**Water Preparation Package** is a self-contained module that houses the essential ancillary equipment needed to condition and monitor the feedwater to be used for steam production. All components are pre-assembled, piped and wired on the module.

## STAINLESS STEEL HOTWELL

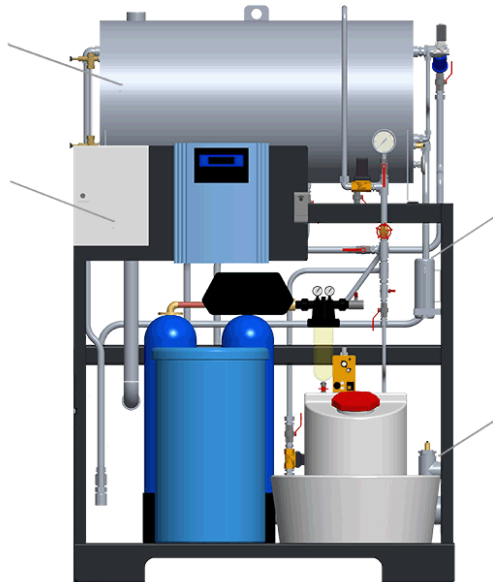
To store and de-gas the feedwater, collect returned condensate and blend water treatment chemicals

## CONTROL PANEL

For automatic operation of the water package.

## WATER SOFTENER

To prevent scale build up. Has two softening columns with automatic changeover and brine tank to make sure water is always soft



## SAMPLE COOLER

To allow water samples to be easily and safely collected

## CHEMICAL DOSING

To ensure that the system is protected at all times. Chemical tank has an outer tank to catch spillage

## BLOWDOWN

To safely eject any waste water. Cooler for CSM15 to 45, Tank for CSM75 to 125

**Fuel Saving Package** will increase fuel efficiency. This reduces fuel consumption and significantly lowers annual running costs. This is achieved by adding an economiser section that will conserve the optimum amount of heat.

**Steam Quality Package** The Steam Quality Package guarantees that the steam supply is at least 99% dry saturated under all output conditions. In addition, this package includes an automatic blowdown system to remove impurities that may be present in the supply water. This is made possible by the use of the unique Clayton High Efficiency Steam Separator. The trapped moisture is collected so that it can be recycled. The Steam Quality Package is fully integrated inside the unit

## Unattended Boiler Room Package

Extends the time allowed for operation without operator attendance from the standard 24 hours to up to one week. This package automatically checks the condition of the water supply.

## Remote Communication Package

You can choose to have messages on the running status sent to a mobile device or have Ethernet communication for data exchange with a remote control system. So you are in constant communication with your steam raising plant at all times.

Movies can be viewed on our website [www.claytonindustries.co.uk](http://www.claytonindustries.co.uk)



## Range of Sizes

The Clayton Range of Steam Generators are suitable for all steam application and can run on natural gas, LPG, light oil, and are available as dual fuel oil/gas versions.

Very high steam pressures are available on standard models and special models that provide steam pressures up to 200 barg can be supplied in most sizes.

Other options include superheated versions, economiser sections to improve efficiency even further, low NOx models as well as marine and offshore versions.



Clayton E- Model (E)



Clayton E-Model (E)

Model Reference	Steam Flow (kg/hr)*	Max Load (kW)
CSM15	235	147
CSM30	469	294
CSM45	703	441
E60-LN	939	589
E75-LN	1174	736
E100-LN	1566	981
E125-LN	1957	1226
E154	2349	1471
E204	3131	1962
E254	3914	2432
E304	4697	2943
E354	5480	3433
E404	6263	3924
E504	7829	4905
E604	9394	5886
E704	10977	6868
E804	12519	7848
E1004	15657	9809
E1104	17223	10790
E1204	18788	11771
E1304	20354	12752
*F&A Values		



Clayton Steam Master (CSM)



Clayton E-LN Model

More details are shown on the data sheets.

Movies can be viewed on our website [www.claytonindustries.co.uk](http://www.claytonindustries.co.uk)



## Exhaust Gas Boilers

**The Clayton Exhaust Gas Boiler** was developed following the success of the Clayton Steam Generator and the design is based on the same tried and tested operating principle. This results in an Exhaust Gas Boiler of small size and weight that can produce steam of very high quality.

An added advantage of the Clayton Forced Circulation Monotube Coil Concept is that is not necessary to rely on any type of fins on the tube surface to assist heat transfer and this reduces the possibility of clogging with exhaust gas deposits. The configuration of the Clayton plain coiled tube is designed to maximise performance and allow free flow of hot gas over the tube in the opposite direction to the water flow in a counterflow pattern for maximum efficiency.

Due to the small size and weight of the Clayton Exhaust Gas Boiler a number of installation options are possible and the boiler can be fitted into the exhaust gas ductwork to suit the client's requirements.



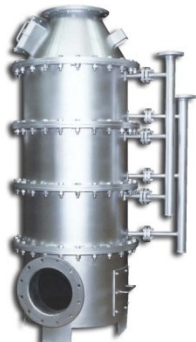
The Clayton Exhaust Gas Boiler can produce steam using the heat in the waste gases from diesel engines, small gas turbines, incinerators, glass furnaces, enamel ovens, stress relieving ovens and other suitable applications.

On marine installations the Clayton Exhaust Gas Boiler has been used extensively for over 40 years to recover heat from the exhaust of main propulsion and power generating diesel engines. On-board ships a separate oil-fired Clayton Steam Generator is often supplied in conjunction with the Clayton Exhaust Gas Boiler for use when the vessel is in port.

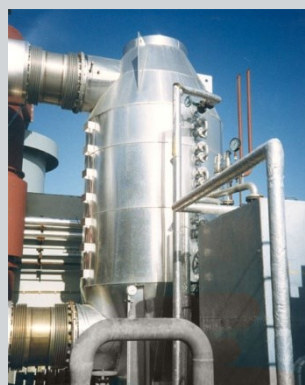
Diesel engines on electrical generators of sizes up to 15 MW of electrical power are ideal for heat recovery using the Clayton Exhaust Gas Boiler these include light and heavy oil fired engines, gas fired engines and dual fuel units of 4-stroke and 2-stroke design.

Heat can be recovered on gas turbines up to 15MWe

The Clayton Exhaust Gas Boiler is also ideally suitable for many other applications depending on flow and temperature.



Movies can be viewed on our website [www.claytonindustries.co.uk](http://www.claytonindustries.co.uk)



## Exhaust Gas Boilers

**Construction** of the Clayton Exhaust Gas Boiler is modular and a range of standard coil sections have been developed to suit a wide variety of process conditions. The sections are chosen for optimum performance by computer programme, based on the heat available, the steam output required and the allowable pressure drop.

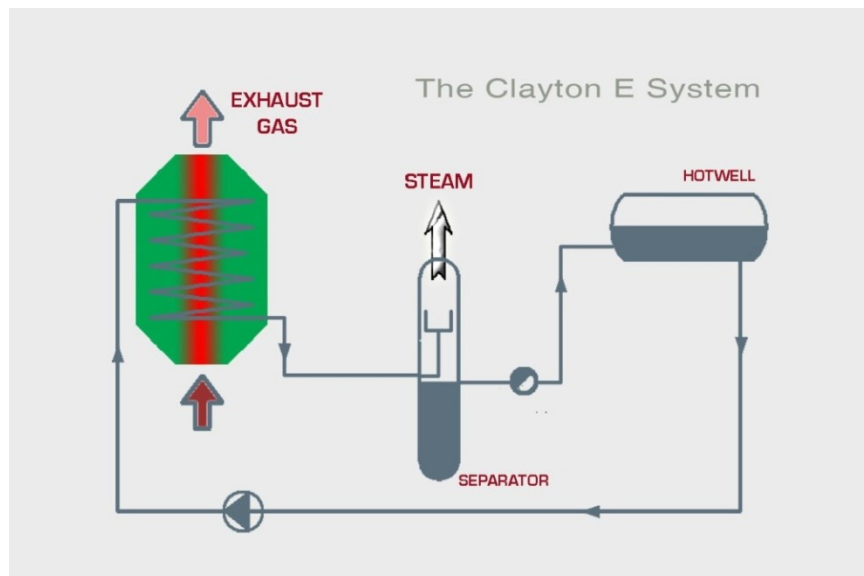


Because of the modular construction of the Clayton Exhaust Gas Boiler the assembly is a straightforward matter since the standard coil sections are bolted together and coned transition pieces are then added onto each end for connecting to the exhaust ducting. The water connections between each section are made on the outside of the boiler shell and an effective sootblowing system is built into every Clayton Exhaust Gas Boiler.



**Clayton Exhaust Gas Systems** have been devised to suit numerous processes. On all designs the water is pumped through the steam generating coil and the steam/water mixture produced at the outlet of the boiler is directed to a vortex separator which can be housed in a separator or accumulator.

More than one Clayton Exhaust Gas Boiler can be connected to a single accumulator. A feature of every system is that means are provided to avoid dew point corrosion of the tubes to prolong the life of the boiler.



Movies can be viewed on our website [www.claytonindustries.co.uk](http://www.claytonindustries.co.uk)



## Customer Care

**Service** for Clayton Steam Generators and Exhaust Gas Boilers is available worldwide in more than 100 countries to provide commissioning, preventative maintenance, and advice to customers. Clayton operate round-the-clock service **24 hours a day, seven days a week and 356 days a year.**



Our after sales service is second to none and all of our engineers are dedicated trained specialists for all Clayton products. In addition all engineers are fully trained and certificated and are familiar with site-safety practices and permit-to-work systems.

**Advice** on installation requirements is available from Clayton engineers and our comprehensive installation manual gives general guidance to installers. Electrical and mechanical drawings are also provided for every unit.

**Preventative Maintenance** Contracts are arranged for many of our customers and these are based on regular visits by our engineers to carry out scheduled maintenance tasks to ensure optimum performance and efficiency. Our engineers are also available for strip-down and refit work associated with insurance inspections. Service contracts can be tailored to suit customers requirements and can range from labour only contracts to complete parts and labour maintenance contracts.

**Commissioning** services are available for equipment on-site and Clayton engineers carry out all necessary safety and operational checks and full commissioning services. Operator training is also available and customised training courses can be arranged if required.

**Spare Parts** are held in stock in many areas of the world and these are available for immediate despatch. Any spare can be provided based on our comprehensive records of every unit supplied. We can also advise on customer spare stocking policy to minimise downtime if required.

**Training** on Clayton Steam Systems can be seminar format or site based, hands-on instructions. The main topics include operating principle, water/steam/fuel system, safety precautions, electrical system, routine maintenance, fault diagnosis, water testing and regular checks. The content of the course can be varied to suit the level of competence of the participants. Technical literature is also provided and a certificate is issued to each student.

*Clayton reserves the right to make alterations to designs and equipment without notice and the information sketches and photographs contained herein is intended as a general guide only. Clayton Industries make no claim as the accuracy of the steam tables or any other data and independent verification of all data should be sought by any person using this information for any purpose.*

Movies can be viewed on our website [www.claytonindustries.co.uk](http://www.claytonindustries.co.uk)



# Clayton Worldwide

**Clayton Steam Systems** is a worldwide company with four manufacturing plants and a vast network of subsidiary companies and distributors throughout the Globe.

**153**

Countries

**489**

Employees

**90**

Years of Experience



## Manufacturing Plants



**World Headquarters**  
17477 Hurley Street  
City of Industry, CA 9174-5106  
U.S.A.  
Tele: +1 626 435 1200  
sales@claytonindustries.com  
[www.claytonindustries.com](http://www.claytonindustries.com)



**Headquarters Europe, Africa  
Middle East**  
Rijksweg 30  
B-2880 Bornem  
Belgium  
Tele: +32 (0)3890 5700  
sales@clayton.be  
[www.claytonsteam.com](http://www.claytonsteam.com)



**Clayton UK**  
14, Howard Court  
Manor Park, Runcorn  
Cheshire, WA7 1SJ  
United Kingdom  
Tele : + 44 (0)1928 579009  
[sales@claytonindustries.co.uk](mailto:sales@claytonindustries.co.uk)  
[www.claytonindustries.co.uk](http://www.claytonindustries.co.uk)



**Clayton Spain**  
C/Vallespir nº19, Edificio Octavia,  
08173 Sant Cugat del Valles  
Barcelona  
Spain  
Tele: +34 93 576 35 79  
clayton@clayton.es  
[www.claytonsteam.com/es-ES](http://www.claytonsteam.com/es-ES)

**Clayton Mexico**  
Manual E. Stampa 54  
Nueva Industrial Vallejo  
Mexico D.F., 07700  
Mexico  
Tele: +52 (55) 5586 5100  
claytonmexico@clayton.com.mx  
[www.clayton.com.mx](http://www.clayton.com.mx)

**Clayton Germany**  
Düsseldorf Str. 85  
40667 Meerbusch  
Germany  
Tel: +49 2132 9959860  
[info@clayton-deutschland.de](mailto:info@clayton-deutschland.de)  
[www.claytonsteam.com/de.DE](http://www.claytonsteam.com/de.DE)

**Clayton Canada**  
13 Edvac Drive, Unit 19  
Brampton, Ontario  
Canada  
Tele: +1 (905) 791-3322  
canada@claytonindustries.com  
[www.claytonindustries.com](http://www.claytonindustries.com)

**CLAYTON France**  
824 avenue du Lys  
77190 DAMMARIÉ LES LYS  
Tel : 0033 1 64 79 40 85  
[lavapeur@clayton.fr](mailto:lavapeur@clayton.fr)  
[www.claytonsteam.com/fr.FR](http://www.claytonsteam.com/fr.FR)

Movies can be viewed on our website [www.claytonindustries.co.uk](http://www.claytonindustries.co.uk)

